

rMan

Utah Scientific
Router Management



US *Utah Scientific*

rMan Operations Guide

- Document Number: 82101-0064
- Document Version: 1.0
- Date: December 29, 2006
- Printed in U.S.A.

Copyrights and Trademarks

© 2006 Utah Scientific, Inc., All rights reserved. Any use or reproduction of this guide's contents without the prior written consent of Utah Scientific, Inc. is strictly prohibited.

- rMan is a trademark of Utah Scientific, Inc.
- Windows 2000, NT, and XP are registered trademarks of Microsoft Corporation.
- All other product names and any registered or unregistered trademarks mentioned in this guide are used for identification purposes only and remain the exclusive property of their respective owners.

Notice

Information contained in this guide is subject to change without notice or obligation. While every effort has been made to ensure that the information is accurate as of the publication date, Utah Scientific, Inc. assumes no liability for errors or omissions. In addition, Utah Scientific, Inc. assumes no responsibility for damages resulting from the use of this guide.

FCC Compliance (USA) and Digital Equipment Compliance (Canada)

This equipment has been tested and found to comply with the limits for a Class A, digital device, pursuant to Part 15, Subpart B of the FCC Rules and the Canadian EMC Requirement (ICES-003). These limits are designed to provide reasonable protection against harmful interference when the equipment is operated in a commercial environment. This equipment generates, uses, and can radiate radio frequency energy and, if not installed and used in accordance with the instruction manual, may cause harmful interference to radio communications. Operation of this equipment in a residential area is likely to cause harmful

interference, in which case, the user will be required to correct the interference at their own expense. Shielded cables must be used to ensure compliance with the FCC Class A limits.

Declaration of Conformity

Utah Scientific, Inc.

4750 Wiley Post Way, Suite 150
Salt Lake City, Utah 84116-2878 U.S.A.

We declare our sole responsibility that the rMan Control System is conformance with the following standards:

- EN50081-1 Generic Emission Standard
- EN50082-1 Generic Immunity Standard
- IEC-950 Product Safety
- C-UL 1950 Product Safety
- UL 1950 Product Safety

Following the provisions of the Directive(s) of the Council of the European Union:

- EMC Directive 89/336/EED
- Low Voltage Electrical Directive 72/23/EEC

Utah Scientific, Inc. hereby declares that the product specified above conforms to the above Directive(s) and Standard(s).



Important Safeguards and Notices

This section provides important safety guidelines for the Operator and Service Personnel. Specific warnings and cautions are found throughout the guide where they apply, but may not appear here. Please read and follow the important safety information, specifically those instructions related to risk of fire, electric shock, or injury to persons.

Safety Symbols



- Hazardous Voltage symbol



- Caution symbol. The product is marked with this symbol when it is necessary to refer to the manual to prevent damage to the product.

Warnings

Please observe the following important warnings:



- Any instructions in this guide that require opening the chassis, changing a power supply, or removing a board, should be performed by qualified personnel only. To reduce the risk of electric shock, do not perform any service unless you are qualified to do so.
- Heed all warnings on the unit and in the operating instructions.
- Do not use this product in or near water. Disconnect AC power before installing any options or servicing the unit unless instructed to do so by this manual.
- This product is grounded through the power cord ground conductor. To avoid electric shock, plug the power cord into a properly wired receptacle before connecting the product inputs or outputs.
- Route power cords and other cables so they won't be damaged.
- The AC receptacle (socket) should be located near the equipment and be easily accessible.
- Disconnect power before cleaning. Do not use any liquid or aerosol cleaner - use only a damp cloth.



- Dangerous voltages exist at several points in this product. To avoid personal injury, do not touch exposed conductors and components while power is on. Do not insert anything into either of the systems two-power supply cavities with power connected.
- Do not wear hand jewelry or watches when troubleshooting high current circuits, such as power supplies. During installation, do not use the door handles or front panels to lift the equipment as they may open abruptly and injure you.
- To avoid fire hazard when replacing fuses, use only the specified correct type, voltage and current rating as referenced in the appropriate parts list for this product. Always refer fuse replacement to qualified service personnel.
- Have qualified personnel perform safety checks after any service.

Cautions

Please observe the following important cautions:



- When installing this equipment do not install power cords to building surfaces. To prevent damage when replacing fuses, locate and correct the problem that caused the fuse to blow, before reconnecting power.
- Use only specified replacement parts

Notices

Please observe the following important notes:



- When the adjacent symbol is indicated on the chassis, please refer to the manual for additional information.
- For the HD-2020 Chassis and Master Control Panel, refer to “Connecting and Disconnecting Power” - Chapter 2 (Hardware Installation).

Company Information

Utah Scientific, Incorporated

**4750 Wiley Post Way, Suite 150
Salt Lake City, Utah 84116-2878 U.S.A.**

- Telephone: +1 (801) 575-8801
- FAX: +1 (801) 537-3098
- Technical Services (voice): +1 (800) 447-7204
- Technical Services (FAX): +1 (801) 537-3069
- E-Mail -General Information: info@utsci.com
- E-Mail -Technical Services: service@utsci.com
- World Wide Web: <http://www.utahscientific.com>
- **After Hours Emergency:** +1 (800) 447-7204. Follow the menu instructions for Emergency Service.

Warranty Policies

Hardware Warranty

Utah Scientific, Inc. warrants to the original purchaser that the Utah Scientific hardware is free from defects in materials and workmanship and will perform substantially in accordance with the accompanying written materials under normal use and service for a period of ten (10) years from the date of shipment. Any implied warranties on hardware are limited to ten (10) years. Some states/jurisdictions do not allow limitations on duration of an implied warranty, so the above limitation may not apply to certain specific purchasers.

Software Warranty

Utah Scientific warrants that the software will perform substantially in accordance with the accompanying written materials for a period of one (1) year from the date of shipment.

Customer Remedies

For the first one (1) year after purchase of the software and the first ten (10) years after the date of purchase of the hardware, Utah Scientific's and its suppliers' entire liability and purchaser's exclusive remedy shall be, at Utah Scientific's option, either:

- Return of the price paid, or
- Repair or replacement of the software or hardware that does not meet the above warranties and is returned to Utah Scientific under the returned materials authorization (RMA) process with freight and forwarding charges paid.

After the initial warranty periods, purchaser's exclusive remedy is the repair or replacement of the hardware upon payment of a fixed fee to cover handling and service costs based on Utah Scientific's then-current price schedule. The above warranties are void if failure of the software or hardware has resulted from an accident, abuse, or misapplication. Any replacement software or hardware will be warranted for the remainder of the original warranty period or thirty (30) days, whichever is longer.

No other warranties. To the maximum extent permitted by applicable law, Utah Scientific and its suppliers disclaim all other warranties, either express or implied, including, but not limited to implied warranties of merchantability and fitness for a particular purpose, with regard to the software, the accompanying written materials, and any accompanying hardware. This limited warranty gives the purchaser specific legal rights. These rights may vary in certain states/jurisdictions.

No liability for consequential damages. To the maximum extent permitted by applicable law, in no event shall Utah Scientific or its suppliers be liable for any damages whatsoever (including without limitation, damages for loss of business profits, business interruption, loss of business information, or any other pecuniary loss) arising out of the use of or inability to use Utah Scientific products, even if Utah Scientific has been advised of the possibility of such damages. Because some states/jurisdictions do not allow the exclusion or limitation of liability for consequential or incidental damages, the above limitation may not apply in those circumstances.

Table of Contents

Section 1

Introduction	1-1
System Overview	1-1
Installing rMan Software	1-2
Connection Parameters	1-2
Status Bar	1-3
Main Screen	1-4
Alarm Status	1-4
Graphical Status	1-5
Graphical Status is a powerful way to view router connections.	1-5
Constructing a Folder View within Graphical Status	1-6
Folder View - File Construction	1-6
Procedure	1-7
Tabular Status	1-11
The Device Number – Examined Further	1-12
Device Configuration	1-12
Event Log	1-13
Individual Messages	1-13
Sorting	1-14
Pause Auto-Scroll	1-14
Take Panel	1-15
Mapping Verification	1-16
Returning to rMan After Mapping	1-18

Section 2

rMan Alarms	2-1
Alarm Types	2-1
Tie-Line Alarms	2-1
Alarm History	2-2
Email Alerts	2-2
Email Configuration	2-2



Chapter 1 - The rMan **Interface**

Introduction

This is essentially the introduction to the rMan Utility.

System Overview

The rMan Utility has been developed as a management tool for Utah Scientific's Router Operations. Once the SC-4 and control panels have been configured using the U-Con utility, rMAN is utilized for system status and maintenance.

rMan can be used throughout the life of the facility's router operations for effective observation and maintenance. The program is also designed to offer corrective 'advice' when certain problems develop. This may involve certain steps or specific corrective action to resolve conflicts.

Installing rMan Software

Locate the system CD that should have been provided with the SC-4 controller. (If you do not have this CD, contact Utah Scientific Customer Support at 800-447-7204). On the CD you will find a folder called *Install 2020*. Open this folder and then open the folder called *release-rMan*. Double-click the *setup.bat* file -- this will install Java onto the PC (required), followed by the rMan application.

Locate and double-click the rMan icon on the desktop to launch the program.

Make sure an Ethernet connection exists between the SC-4/400 and the PC containing the rMan application. Follow the standard Ethernet protocol for the connection, using CAT5 cable. A crossover cable is required if running directly between the devices.

Connection Parameters

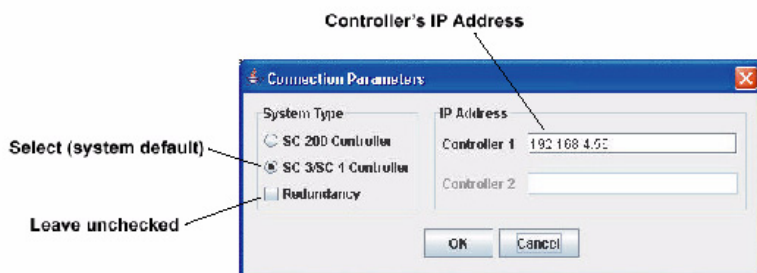


FIGURE 1-1.

This is the first window that will appear when rMan is launched. Make sure the default IP address is correct, or enter the correct address at this time.

The following screen will appear once a connection has been established.

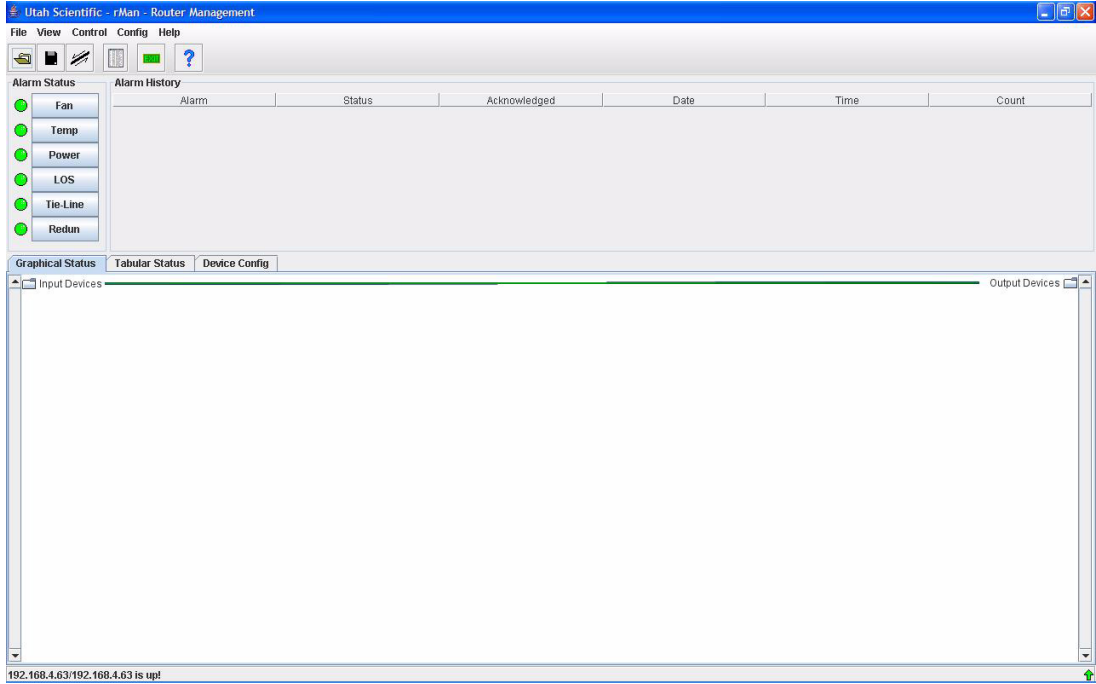
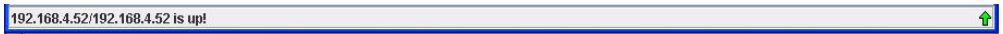


FIGURE 1-2.

As you can see, all connection detail is minimized in the folder view (large white area).

Status Bar

Located at the bottom of the display, the Status Bar displays the current connection activity. The green [up] arrow on the right side indicates an 'active' connection.



If the green arrow is not visible, establish a connection by selecting 'Connect' from the File menu, or by clicking the connect icon (just below the Control menu).

Main Screen

Typically the user will begin running rMan after the system is configured and running. The user is initially provided with the current alarm status and alarm history.

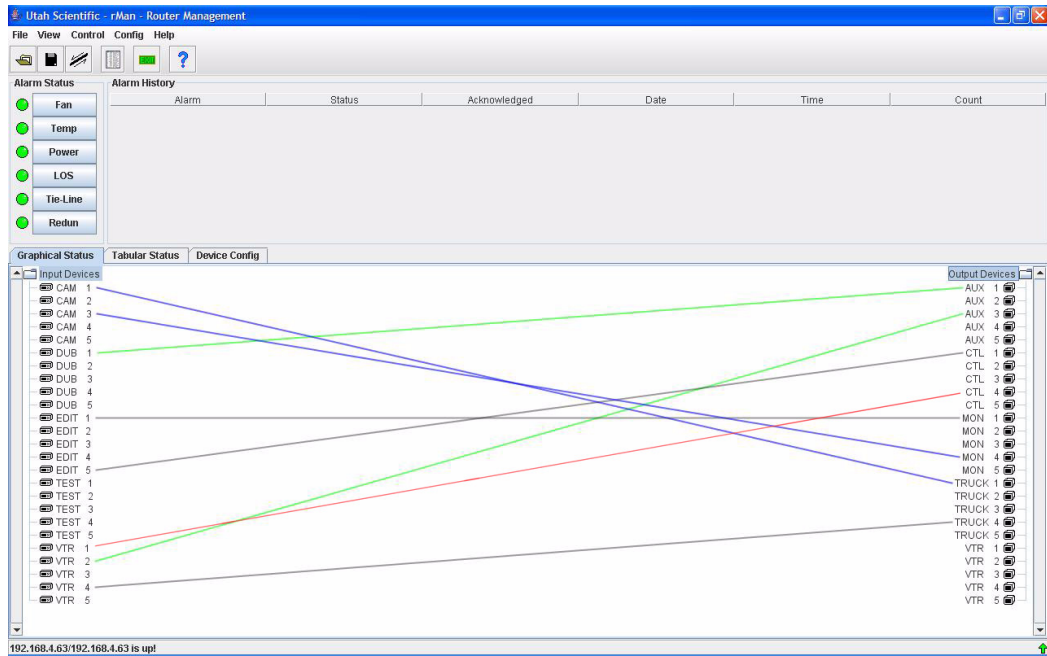


FIGURE 1-3.

Once a connection has been established, you will see the IP address along the lower-left corner of the display, and a green (up) arrow in the lower-right corner. Alarm LEDs will display green initially, then turn red if any alarm conditions exist.

Alarm Status

See Chapter 2 for more information regarding Alarm Status and History.

Graphical Status

Graphical Status is a powerful way to view router connections.

Connection Lines

The lines you see connecting the right and left columns (devices) indicate an actual connection between the Input device and an Output device through the router. The different colors have specific meanings:

Blue – Video connection

Green – Audio connection

Gray – Other kinds of connections (General), such as video and audio together. Data routing can also be black.

Red – This indicates a Tie Line connection. The red line also indicates tie line status.

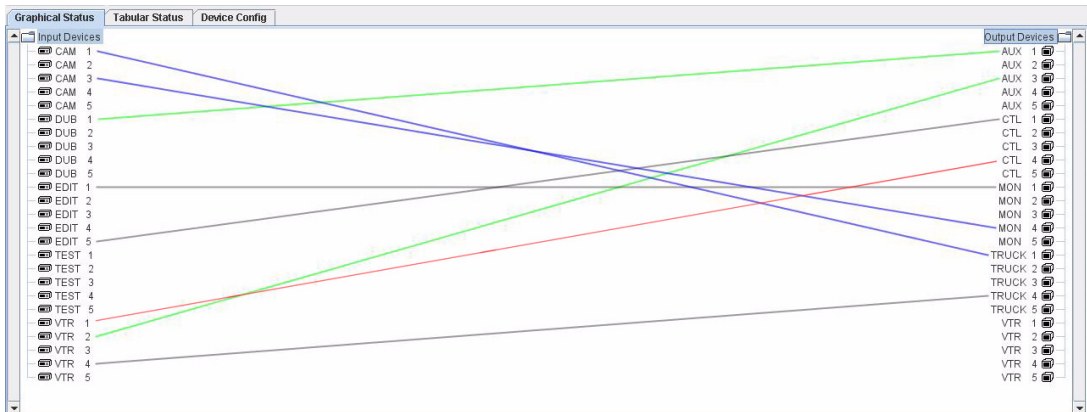


FIGURE 1-4.

Constructing a Folder View within *Graphical Status*

The Folder View file modification is the process of organizing essential display activity into manageable directories (folders) for easier reference. You will start with the default flat view of the layout (Fig. 1-4) then construct new folders associated by Group Names. The file modification process consists of adding the appropriate HTML code to the beginning and end of each group block within your saved file (see illustration). The illustration will contain references to the start and stop points that will be used for the HTML markers.

Flat View

The Flat View exists as a convenience for the user, as the operator is not required to create a file to start up. Specifically, when rMan is first run, there is no file associated with the view, so the system simply obtains default information from the SC-4 and creates a device listing. The user can save this information as a file for convenience.

Device format (analog or digital views)

Organizing Input and Output devices into folders helps to minimize clutter and gives a high-level, layered view of the router status. rMan gives you the ability to organize devices by geographic location within your facility. This is possibly the most useful way of viewing system status. Device management of this type can involve edit bays, control rooms, switchers, video areas, etc.

Folder View - File Construction

This guide contains an example of the finished (saved) XML file that you will be working with prior to creating the folder view. This XML file will contain the Input and Device name, along with all other applicable devices. You'll use this file to essentially construct new groups into a better organized folder view.

As mentioned, the file modification consists of adding the appropriate HTML code to the beginning and end of each group block (in the already saved XML file). This process involves simply the copy and paste of a short text string at the beginning and end of given text blocks. *This will be illustrated in our example.*

Procedure

While in the flat view (Figure 1-4), select Close from the File menu. When this is done, all detail contained in the large white display area will *minimize down* to show only the Input and Output devices.

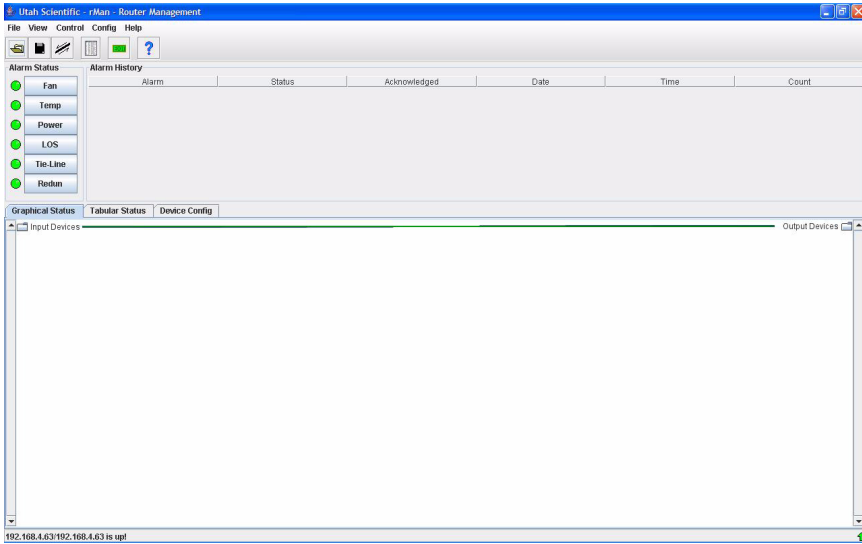
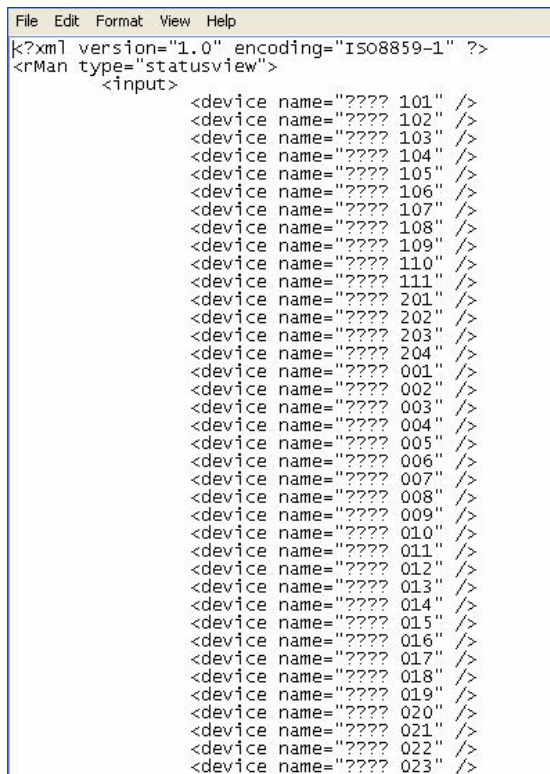


FIGURE 1-5.

At this point return to the *File* menu and select **Save**. This will open a standard Save dialog that will default (for the save) to the last hard drive location. Name the file, and make sure you add a **txt** extension. Click OK to close the window.

Next, close the rMan application completely, then open a text editor (such as *Notepad*) and open the just-saved file. The file will look similar to this:

A screenshot of a text editor window with a menu bar (File, Edit, Format, View, Help) and a text area containing XML code. The code starts with an XML declaration and an opening tag for 'statusview'. Inside, there is an opening tag for 'input' followed by a list of 23 closing tags for 'device' elements, each with a name consisting of four question marks and a number from 101 to 023.

```
File Edit Format View Help
<?xml version="1.0" encoding="Iso8859-1" ?>
<rMan type="statusview">
  <input>
    <device name="???? 101" />
    <device name="???? 102" />
    <device name="???? 103" />
    <device name="???? 104" />
    <device name="???? 105" />
    <device name="???? 106" />
    <device name="???? 107" />
    <device name="???? 108" />
    <device name="???? 109" />
    <device name="???? 110" />
    <device name="???? 111" />
    <device name="???? 201" />
    <device name="???? 202" />
    <device name="???? 203" />
    <device name="???? 204" />
    <device name="???? 001" />
    <device name="???? 002" />
    <device name="???? 003" />
    <device name="???? 004" />
    <device name="???? 005" />
    <device name="???? 006" />
    <device name="???? 007" />
    <device name="???? 008" />
    <device name="???? 009" />
    <device name="???? 010" />
    <device name="???? 011" />
    <device name="???? 012" />
    <device name="???? 013" />
    <device name="???? 014" />
    <device name="???? 015" />
    <device name="???? 016" />
    <device name="???? 017" />
    <device name="???? 018" />
    <device name="???? 019" />
    <device name="???? 020" />
    <device name="???? 021" />
    <device name="???? 022" />
    <device name="???? 023" />
```

FIGURE 1-6.

Before proceeding, click 'Save As' from the File menu, and place an XML extension at the end of the file name.

example: rman1.xml

It is at this point that you'll add the proper HTML 'open' and 'close' text strings to the indicated text blocks. These HTML strings are easy to use, and if you have experience with HTML code you will already be familiar with them. In this exercise we will be breaking the devices you see listed above (Fig. 1-6) into manageable groups, so we'll be placing group 'open' and 'close' markers at specific locations. These locations are determined by preference -- or where you would like the devices to start and end in each group. (See the next Figure).

The HTML string for 'open' group is

```
<group name="VT">
```

The "VT" in the above example is the VTR reference found in the original text file, and will appear in the finished rMan folder view. This could also refer to other devices, such as CAM, AUX, NT, etc.

The HTML string for the 'close' group is

```
</group>
```

When complete, your edited text file should look similar to this:

```
rman view
<?xml version="1.0" encoding="ISO8859-1" ?>
<rMan type="statusview">
  <input>
    <group name="UT">
      <device name="UT 001" //>
      <device name="UT 005" //>
      <device name="UT 007" //>
      <device name="UT 008" //>
      <device name="UT 009" //>
      <device name="UT 002" //>
    </group>
    <group name="NT">
      <device name="NT 001" //>
      <device name="NT 002" //>
      <device name="NT 003" //>
      <device name="NT 004" //>
      <device name="NT 005" //>
      <device name="NT 006" //>
      <device name="NT 007" //>
      <device name="NT 008" //>
      <device name="NT 009" //>
      <device name="NT 010" //>
    </group>
  </input>
  <output>
    <group name="UT">
      <device name="UT 001" //>
      <device name="UT 002" //>
      <device name="UT 015" //>
    </group>
    <group name="AX">
      <device name="AX 005" //>
      <device name="AX 006" //>
    </group>
  </output>
</rMan>
```

FIGURE 1-7.

Notice that the devices are now separated into manageable group blocks.

Now re-save this file (making sure the 'XML' extension is in place), re-launch rMan, then open the new file.

You will now have a revised graphical folder view of your components, as opposed to the 'flat' view that was previously available.

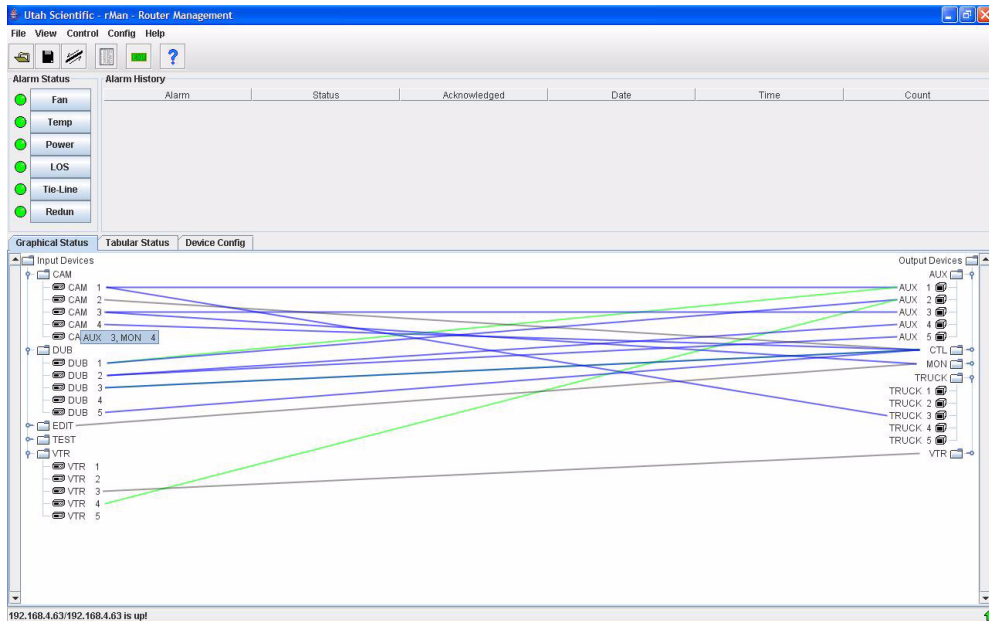


FIGURE 1-8.

You can organize different sets of devices within a facility, then place this listing in a view file for convenience. It is possible to have different views of the system by creating different files (above procedure). A file simply contains a definition as to how the view should look.

Tabular Status

Tabular Status is the traditional way to view router status. Destination devices are displayed on the left, while connected source status is listed to the right.

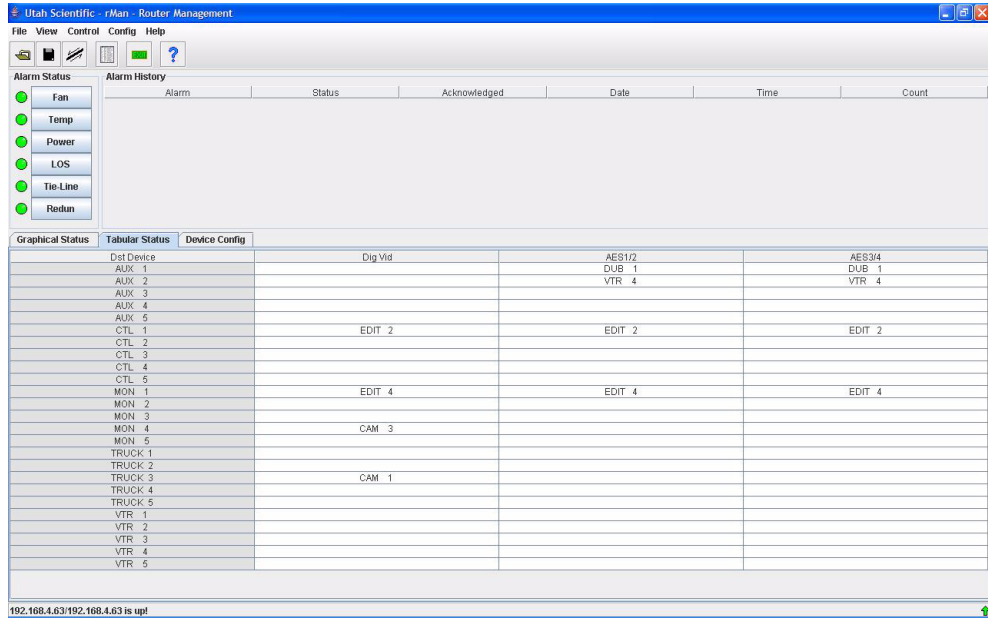


FIGURE 1-9.

The above view contains the actual status of the names within the system, rather than graphical connections only. This includes the mnemonic names of each connection, with real time updates shown in the 'Source Name' column.

The Device Number – Examined Further

The device number is associated with various ‘mappings’ that are taking place within the SC-4. Device numbers are in effect, markers that the SC-4 uses to place devices within the table. All items – whether they’re cameras, monitors, or anything else – get ‘device numbers’ that are utilized during the switching process, and everything in the control panel contains a device number for switching purposes.

Numbers are also ‘mapped’ to given ‘Levels’. The ‘mapping’ is a means for directing the signal to the appropriate crosspoint in the router, so that the switching can occur at the right place.

Device Configuration

This table is an actual readback of the current Source and Destination list taken from the SC-4. This is a global crosspoint table that is used by all devices such as control panels, master control switchers, and automation programs attached to the SC-4. These devices all use the same index table that in turn, maps to the individual crosspoint numbers for the different level formats of video, audio, data routers, etc.

Click the Source or Destination button (found in the Device Configuration table) to view the index table with its associated level crosspoints.

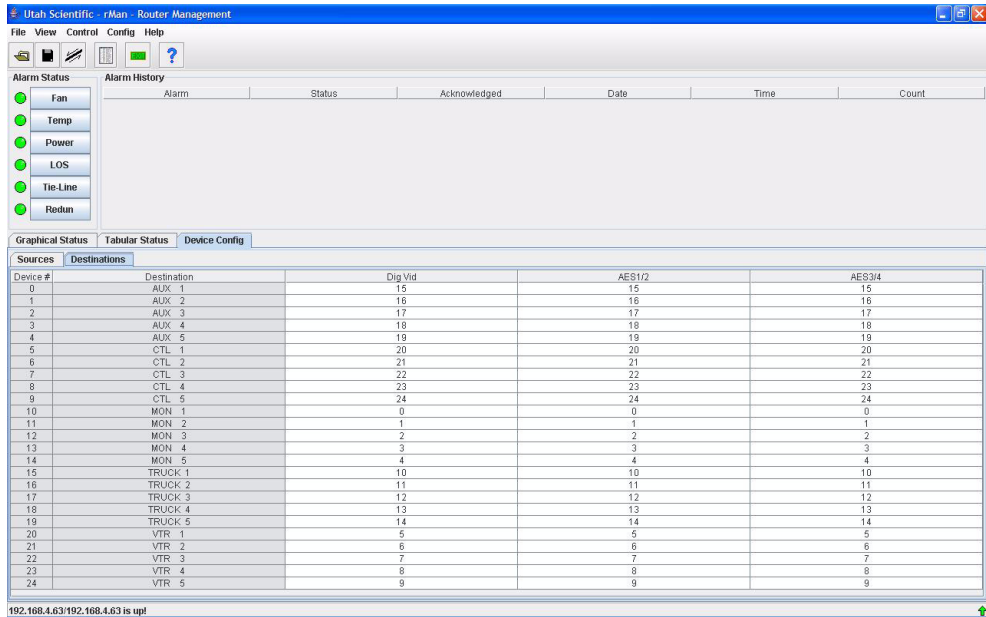


FIGURE 1-10.



Event Log

The Event Log is essentially a listing of all actions that have occurred. To locate this listing, select Event Log from the View menu. (You can also select Event Log from the icon toolbar.)

Individual Messages

A 'Take' message will contain associated Device Numbers. The message will, in turn, indicate what actual physical inputs and outputs switched on the Router.

Within the Event Log, you can click on the Headings to sort them in a given manner. This procedure is helpful in searching for an individual event.

You have the ability to sort the headings in a column basis. When new events are activated, they will automatically drop to the bottom of the column in a scrolling fashion. New events can be viewed by scrolling to the bottom of the listing.

Event	Date	Time	Details
UTAH router take	10/6/2006	13:03:55	Input 86, output 81, levels: 1
UTAH router take	10/6/2006	13:03:56	Input 88, output 100, levels: 1
UTAH router take	10/6/2006	13:03:56	Input 88, output 100, levels: 2
UTAH router take	10/6/2006	13:03:56	Input 88, output 101, levels: 1
UTAH router take	10/6/2006	13:03:56	Input 88, output 101, levels: 2
UTAH router take	10/6/2006	13:03:56	Input 88, output 81, levels: 1
UTAH router take	10/11/2006	11:22:59	Input 9, output 21, levels: 1
UTAH router take	10/6/2006	13:03:57	Input 81, output 100, levels: 1
UTAH router take	10/6/2006	13:03:57	Input 81, output 100, levels: 2
UTAH router take	10/6/2006	13:03:57	Input 81, output 101, levels: 1
UTAH router take	10/6/2006	13:03:57	Input 81, output 101, levels: 2
UTAH router take	10/6/2006	13:03:57	Input 81, output 81, levels: 1
SCP panel take	10/6/2006	13:03:50	Panel node 0, input 31, output 100, levels: 1,2
SCP panel take	10/6/2006	13:03:47	Panel node 0, input 31, output 101, levels: 1,2
SCP panel take	10/6/2006	13:03:50	Panel node 0, input 31, output 81, levels: 1
SCP panel take	10/6/2006	13:03:54	Panel node 0, input 39, output 100, levels: 1,2
SCP panel take	10/6/2006	13:03:53	Panel node 0, input 39, output 101, levels: 1,2
SCP panel take	10/6/2006	13:03:54	Panel node 0, input 39, output 81, levels: 1
SCP panel take	10/6/2006	13:03:51	Panel node 0, input 43, output 100, levels: 1,2
SCP panel take	10/6/2006	13:03:51	Panel node 0, input 43, output 101, levels: 1,2
SCP panel take	10/6/2006	13:03:51	Panel node 0, input 43, output 81, levels: 1
SCP panel take	10/6/2006	13:03:59	Panel node 0, input 56, output 100, levels: 1,2
SCP panel take	10/6/2006	13:03:59	Panel node 0, input 56, output 101, levels: 1,2
SCP panel take	10/6/2006	13:03:59	Panel node 0, input 56, output 81, levels: 1
SCP panel take	10/6/2006	13:04:01	Panel node 0, input 77, output 100, levels: 1,2
SCP panel take	10/6/2006	13:04:00	Panel node 0, input 77, output 101, levels: 1,2
SCP panel take	10/6/2006	13:04:01	Panel node 0, input 77, output 81, levels: 1
SCP panel take	10/6/2006	13:03:55	Panel node 0, input 86, output 100, levels: 1,2
SCP panel take	10/6/2006	13:03:54	Panel node 0, input 86, output 101, levels: 1,2
SCP panel take	10/6/2006	13:03:55	Panel node 0, input 86, output 81, levels: 1
SCP panel take	10/6/2006	13:03:56	Panel node 0, input 88, output 100, levels: 1,2
SCP panel take	10/6/2006	13:03:56	Panel node 0, input 88, output 101, levels: 1,2
SCP panel take	10/6/2006	13:03:56	Panel node 0, input 88, output 81, levels: 1
SCP panel take	10/6/2006	13:03:57	Panel node 0, input 91, output 100, levels: 1,2
SCP panel take	10/6/2006	13:03:57	Panel node 0, input 91, output 101, levels: 1,2
SCP panel take	10/6/2006	13:03:57	Panel node 0, input 91, output 81, levels: 1
SCP panel take	10/11/2006	11:21:33	Panel node 8, input 0, output 0, levels: 1
SCP panel take	10/11/2006	11:22:33	Panel node 8, input 2, output 2, levels: 1
SCP panel take	10/11/2006	11:22:00	Panel node 8, input 3, output 9, levels: 1
SCP panel take	10/11/2006	11:21:54	Panel node 8, input 5, output 1, levels: 1
SCP panel take	10/11/2006	11:22:43	Panel node 8, input 5, output 5, levels: 1
SCP panel take	10/11/2006	11:22:28	Panel node 8, input 6, output 3, levels: 1
SCP panel take	10/11/2006	11:22:10	Panel node 8, input 6, output 4, levels: 1
SCP panel take	10/11/2006	11:22:20	Panel node 8, input 7, output 5, levels: 1
SCP panel take	10/11/2006	11:22:54	Panel node 8, input 7, output 7, levels: 1
SCP panel take	10/11/2006	11:22:59	Panel node 8, input 9, output 6, levels: 1

Note: Note: New takes coming into the program display will be added at the bottom of the list. This can amount to a lot of activity within the list, making the location of older entries difficult. Use the toggle button to pause the Auto-Scroll. For convenience, this will keep the screen from updating and allow the user to scroll and search for specific entries.

Sorting

This is a new addition to the program, and you can sort by Event, Time, or by Details. Clicking any of the column buttons (top) gives you different sorting capabilities for that particular column detail. The arrow upward will place the most recent activity at the bottom of the column. The Event column can be sorted alphabetically; with an 'arrow up' sorting from A to Z, while the down arrow sorts Z to A. The default sorting method is down arrow. The most recent activity is displayed at the bottom of the list, and the oldest detail will appear at the top of the column display.

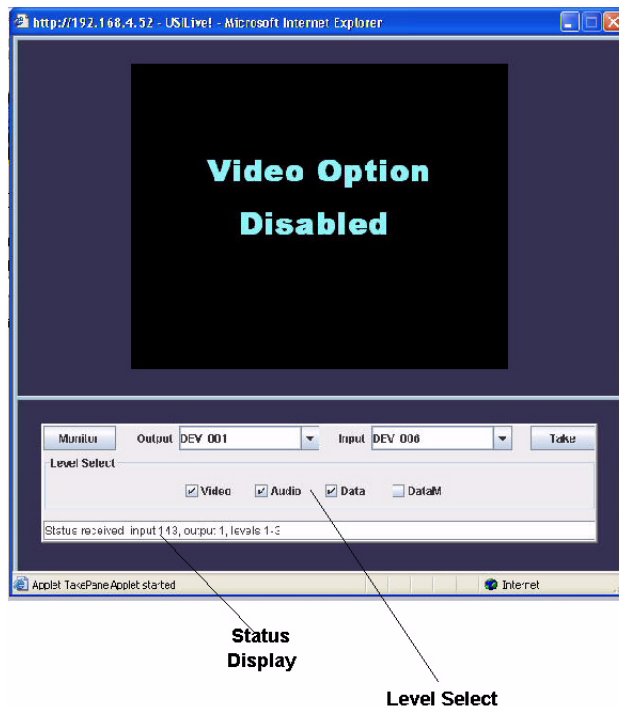
Pause Auto-Scroll

When clicked, program Takes are 'still stored' within the SC-4, but are not displayed (for scrolling) within the Log. This is useful because in active scrolling situations, detail is arriving in the log too quickly for there to be a coherent display.

Take Panel

The Take Panel provides a means for displaying the current status information for any of the controller's Inputs and Outputs. The Input, Output, and a Level selection must be made (bottom checkbox) to activate the Take button. When the Take button is clicked, a take is performed and current status for the last take (associated with the Input, Output, and Level) is displayed at the bottom of the dialog box. Selecting a different Output from the list causes the Take button to turn gray, indicating that the source box and levels check boxes are showing current status.

With a video encoder in place, the program provides a display for the selected Output in the large view area.



To use the viewer, attach the monitor output from the digital router to the encoder unit that is attached to the PC. To view a specific output, select it from the output dropdown box and then press the monitor button.

Important: An Internet browser must be correctly mapped to the operating system for this utility to work properly. For the setup procedure, see next.

Mapping Verification

Mapping Verification is the method for activating your Internet browser, so that each time the rMan Take Panel is used your selected browser automatically appears. The following steps will cover the setup process; and will allow you to verify the browser currently in place, change the browser (selection), or add one if none currently exists.

From the **Start** button, select *Control Panel*, then *Printers and Other Hardware*. Next, select 'System' (menu item on the left), the *Advanced* tab, then 'Environment Variables' (button near the lower-left area).

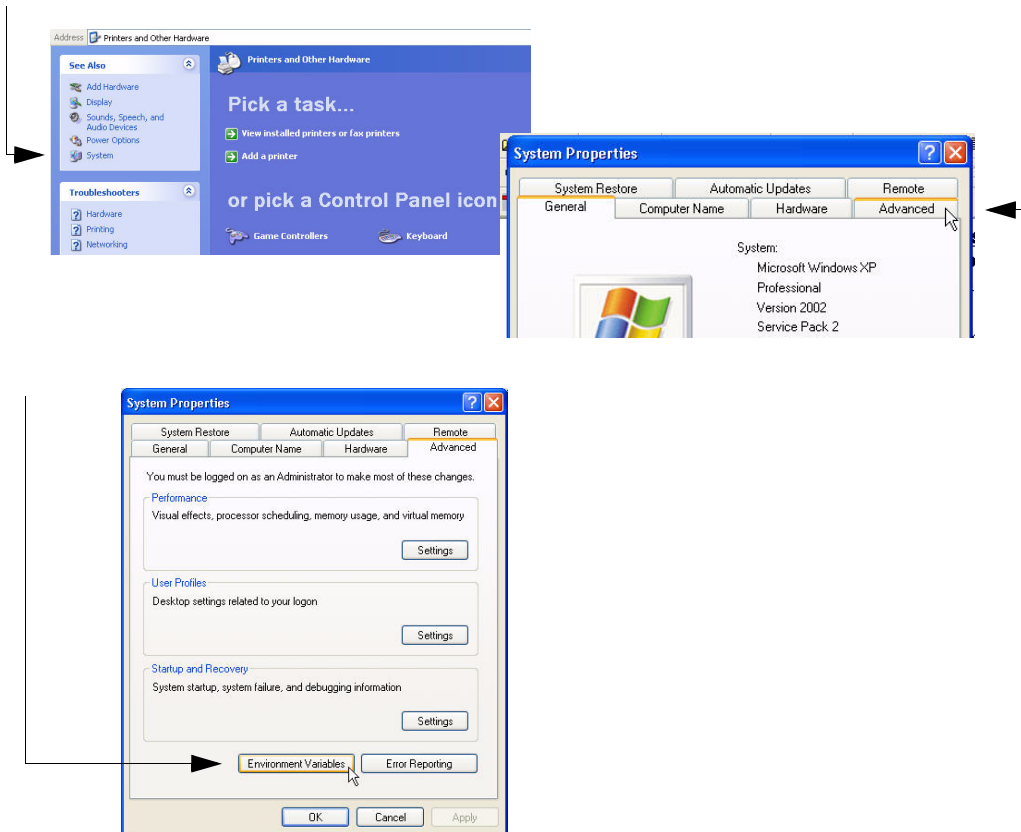


FIGURE 1-11.

In the 'System Variables' window, scroll down until 'Path' is visible. Highlight 'Path', then click the Edit button.

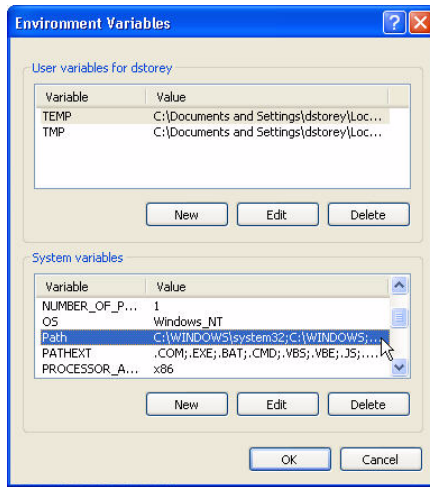


FIGURE 1-12.

When the Edit window appears, go to the 'Variable Value' text box and type the following Immediately after the semi-colon:

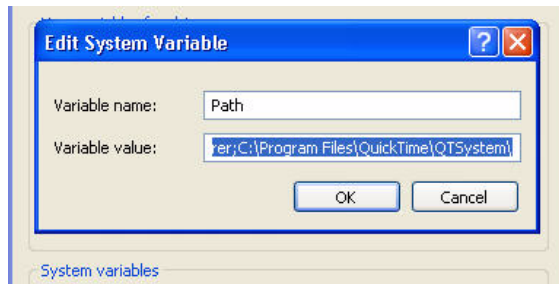


FIGURE 1-13.

This is where the name of the current Internet browser needs to appear, immediately after the last semi-colon. If it is already there, do nothing. If there is no semi-colon and/or you do not see the name of the Internet browser, type the following:

c:\Program Files\Internet Explorer

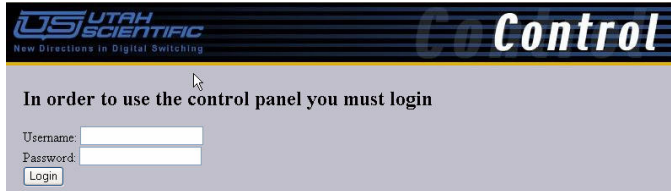
(You can substitute *Internet Explorer* with another browser if you prefer.)

When the above has been entered, click **OK** to close all dialog windows.

Returning to rMan After Mapping

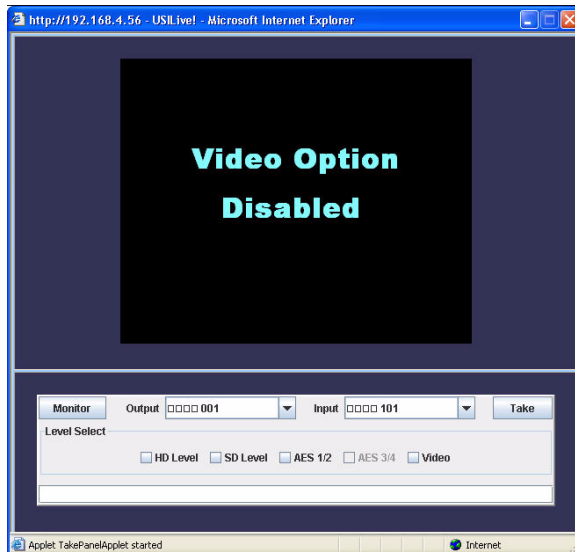
You can now activate the Internet browser by accessing the Take Panel (Control menu).

The above action allows the web page associated with the SC-4 control panel to launch. When you select the Take Panel, the user name and password entry dialog will appear.



These are currently set as defaults: admin for username and admin for password. *Not changeable at present.*

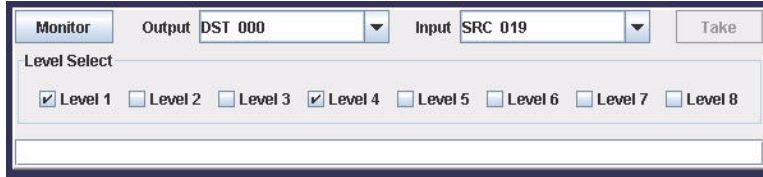
Click the Login button (shown above). This will direct you to a sub-browser (dialog). The video output (if present) is the output of a decoder card, or the monitor output of the router. The actual video display is optional and is driven by a separate video card.



The control area (lower portion of the screen) is essentially an Ethernet control panel, in sync with the SC-4. The input and output lists (dropdown menus), contains all current system devices.



Making Output selections, as an example, is simply a matter of highlighting the item from the dropdown menu. The Levels that are currently available for the selected output will appear under the dropdown list.



You can highlight the levels you want to associate the Take to by clicking their associated checkboxes. Clicking the Take button will perform the actual switch. The switch will be confirmed in the bottom white bar (message area).

Clicking the 'Monitor' button will switch the selected Output to the monitor bus for verification (viewing) purposes.

Important to Note

It is not mandatory for rMan to be operating to achieve the above monitoring. Using the SC-4's IP address, you can go directly to the SC-4's web page and perform the same functions. Do this by selecting the (4th) item in the listing – SC-4 Router Control.

Chapter 2 - rMan Alarms **and Alerts**

rMan Alarms

rMan monitors the alarm status, including the severity of the condition and the alarm's history.¹

Alarm Status – Alarm Status is defined by the LEDs that are displayed on the interface. A red LED indicates a minor error, flashing red indicates a major error, and a green LED indicates a cleared status. View

Clicking the button next to the LED will provide specific status information regarding the nature of the alarm.

Alarm Types

Tie-Line Alarms

A Tie Line Alarm is likely the most frequent alarm you will encounter. Tie Lines support transparent signal conversion. Tie Lines are limited in number, and Tie Line alarms occur when the system has reached its capacity.

Groups of Tie Lines can be managed together as a 'pool', and when a tie line pool reaches its pre-configured alarm threshold, the alarm is produced. This will not be a major alarm since no critical operations are affected, but when the capacity is exceeded, the alarm status becomes major.

When a Tie Line alarm occurs, you will be prompted to find the current locations for tie line use, then disconnect the ones that are not neces-

1. Currently, the only alarms that are functional are the tielines and LOS alarms.

sary. You can determine what destinations are using tie lines by simply looking at the graphical interface and seeing where the red lines are connected.

Alarm History

The Alarm History reflects the 'Life Cycle' of an alarm condition. Meaning, an alarm will exist until the status is cleared and the user has clicked 'Acknowledge' on the dialog display.

If an alarm condition appears and later subsides without anyone verifying it, the alarm still exists as an 'alarm condition' until it is acknowledged. Once the alarm is acknowledged and cleared, it then will assume a 'green' or cleared status. The program provides a count of the total number of times an alarm has occurred before being acknowledged.

Alarm events also appear in the Event Log as line items

Email Alerts

rMAN can automatically send email alerts any time an alarm event occurs. The list of recipients is definable within the program.

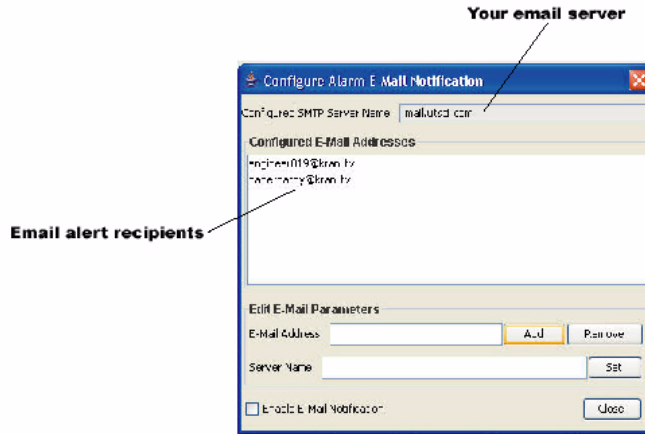
Email Configuration

A listing of email addresses (for the alert notification) is configured within the SMTP mail server.



Addresses are either enabled or disabled at this location. To add a new email address, just type the new address in the provided window and click Add. The complete list of addresses will appear in the larger window (illustration on right). You can

also designate the Server Name you will be using for Email. Changes made are saved in the rMAN settings file.



Index

A

Alarm History 2-2
Alarm Status 2-1
Alarm Types 2-1
Audio connection 1-5

C

Connection Lines 1-11
Connection Parameters 1-5

D

Data routing 1-5
Device Configuration
 column views 1-12
Device format 1-6

E

Email Alerts 2-2
Email Configuration 2-2
Event Log 1-13, 2-2

F

Flat View 1-6

G

Graphical Status 1-5

I

Individual Messages 1-13

L

Life Cycle
 alarm condition 2-2

M

Main Screen 1-4

R

rMan Alarms 2-1

S

Status Bar 1-4

T

Tabular Status 1-11
Take Panel 1-15

Tie Line connection
 connection 1-5
Tie-Line Alarms 2-1

V

Video connection 1-5